

AUTISM



Autism Spectrum Disorder (ASD) is a complex developmental disability; signs typically appear during early childhood and affects a person's ability to communicate and interact with others. ASD is defined by a certain set of behaviors and is a "spectrum condition" that affects individuals differently and to varying degrees. There is no known single cause of autism, but increased awareness, early diagnosis/intervention, and access to appropriate services/supports can lead to significantly improved outcomes.



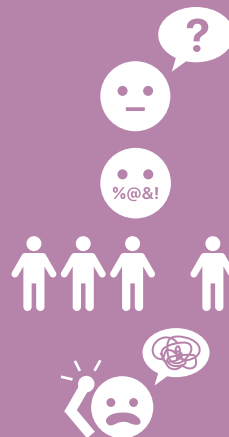
NUMBERS

3.5 million Americans live with Autism Spectrum Disorder.*



1 in 68 **eight-year-old** children have Autism Spectrum Disorder (ASD).**

SIGNS



- Learning disability such as delayed speech development
- Inappropriate language
- Social withdrawal
- Difficulty expressing needs; may use gestures

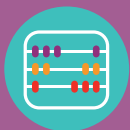
Best Practices for Students with Autism



Use simple sentences and bullets when possible



Do not use bright colors



Use concrete visual methods to teach number concepts



Avoid long blocks of text



When possible avoid fluorescent lights due to the flicker



Avoid sensory overload such as strong odors and loud noises in enclosed classrooms



Students with autism are literal; do not use figures of speech



Give the student extra time to process spoken language

* Autism Society Organization

**Centers for Disease Control and Prevention